

3d printed camera support for rising platform.

Ver 1.0 05 March 2026

The little rising platform (pictured below) available from AliExpress (detailed on the parts list document), is ideal for raising the camera to the correct height when using The Shutter Tester.

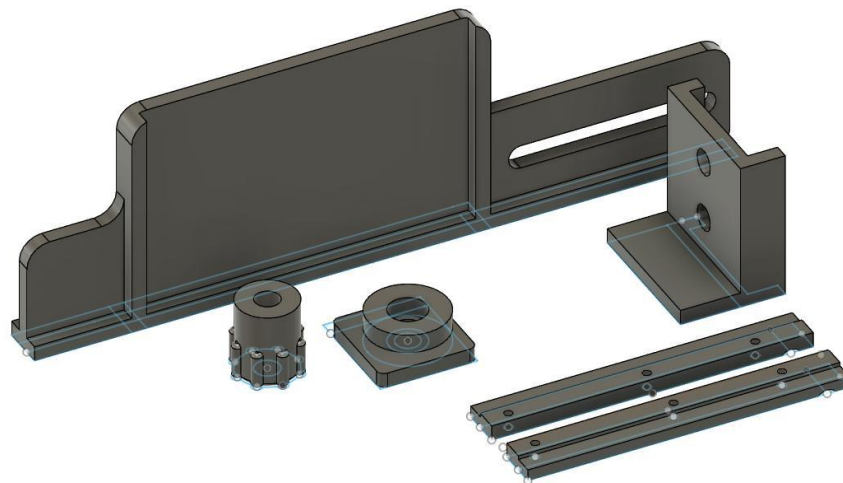
However, the platform is a little too small, so a larger top can be printed, which also has the advantage of locating the camera correctly in the left-right position.



lifting table from AliExpress

The parts to be printed are shown below. The main platform should be printed with supports, to ensure the slot is formed correctly.

Other parts do not need supports. The parts are drawn all on one plate, but it is best to print each part separately.



The parts are,
Main table,
sliding L piece,
hand adjuster (houses bolt)
captive nut plate
2 X clamps, to screw the table to the baseplate.

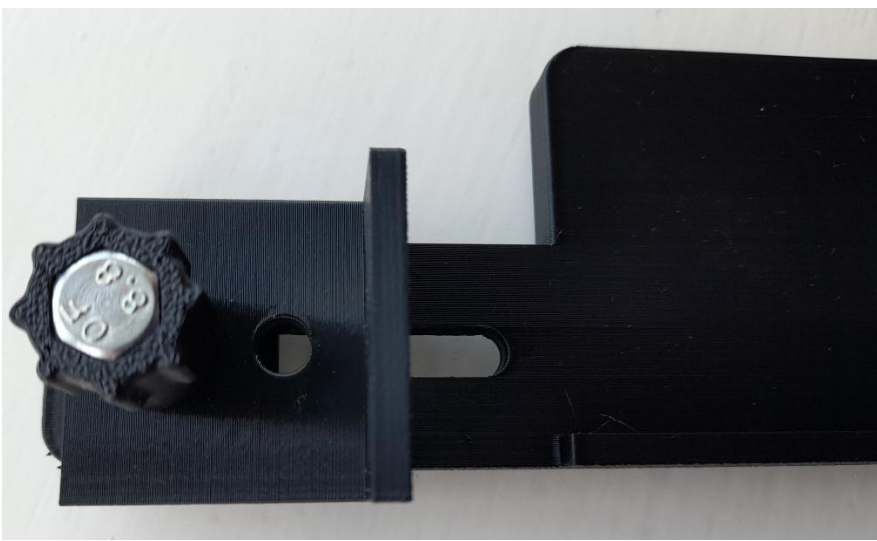
Additionally, one M5 X 35mm nut, bolt & washer, with 10mm head, will be required, screws to fix the platform to your baseboard and adhesive to glue the 3d printed part onto the platform.

After printing, the bolt is pushed into the hand adjuster and head pushed into the hex opening at the end. It is a tight fit. You may need to put the washer and nut on the thread and tighten the nut, to pull the head of the bolt into the hex cut-out.



The nut is pushed into the hex shaped hole in the captive nut plate.
This is similarly a tight fit and may need the washer and bolt, to pull the nut in.

These two parts (with washer) are assembled with the L piece, to allow for adjustment to suit the camera width, as shown below.



The platform is fixed to your baseplate using the two rectangular parts. Pilot holes are there, drill to the required size to fit your screws.



The 3d printed assembly is best attached to the platform using a suitable adhesive.

If using screws, holes must be drilled & countersunk.

There is little space below the platform, so screws must be short, else they will foul the lifting mechanism.

