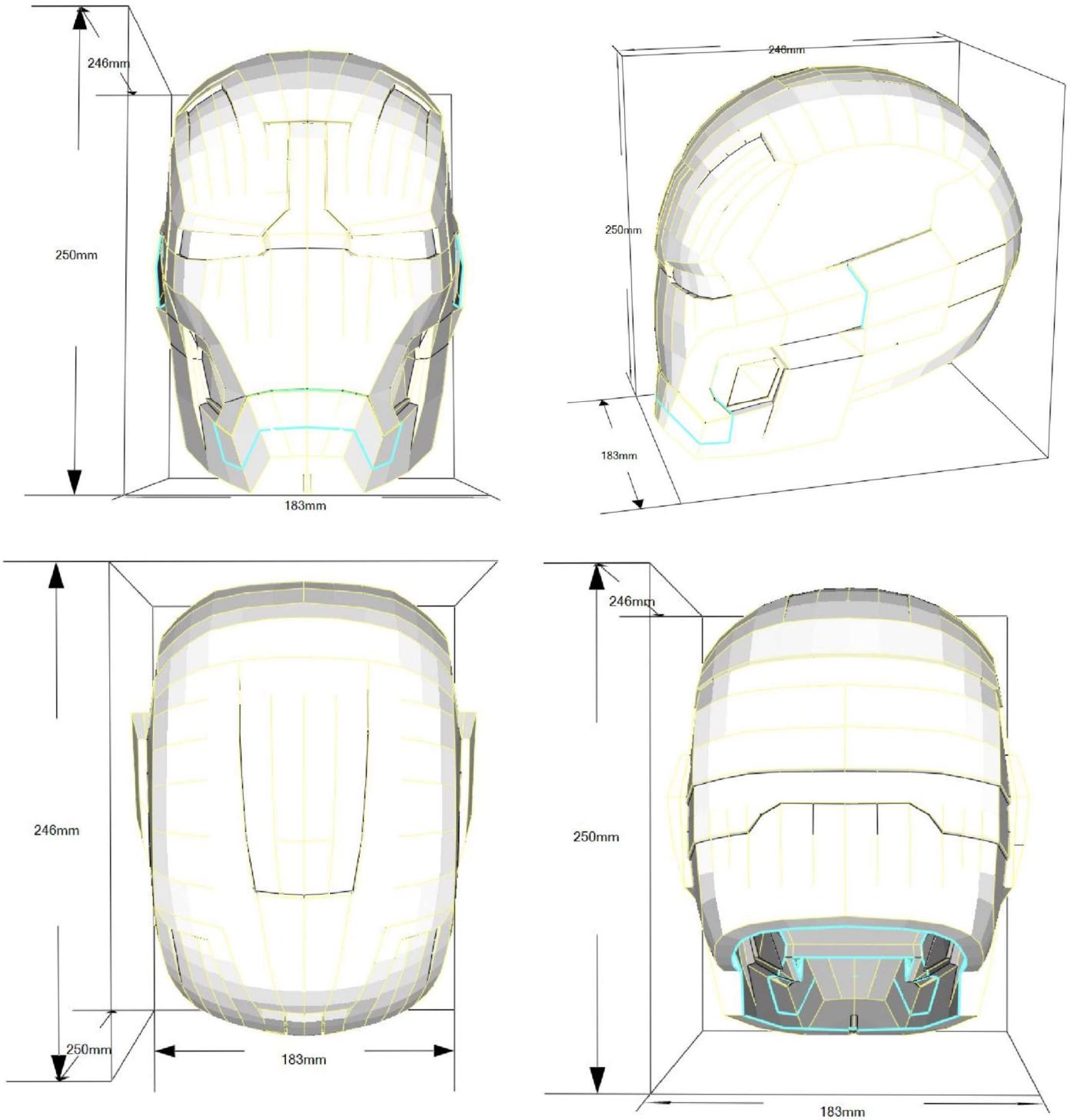


Ironman Mark IV



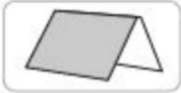
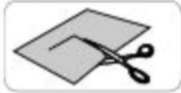
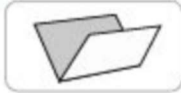



Tools:

11 pages A4 160 g/m2 sheet
(without cover and instruction pages)
Paper glue
Fast glue
Scissor
Tweezer
Ruler
Empty ball pen
Painting spray primer
RAL 1012 color paint (1-16, except 11,12)
RAL 3020 color paint (17-45)
RAL 1016 color paint (11,12)



Instructions

<p>----- Mountain fold line (dotted line)</p> <p>● Make a mountain fold.</p> 	<p>————— Cut line (solid line)</p> <p>● Cut out.</p> 	<p>- - - - - Valley fold line (dotted and dash line)</p> <p>● Make a valley fold.</p> 	<p>————— Slot line (solid line)</p> <p>● Cut a slot.</p> 
--	--	--	--


● Use a set square or ruler and a dried up pen to score along the dotted lines, and fold along them to make creases.

● Work curves into the pieces using a metal rod before beginning assembly. For small pieces, add curves before cutting them out.

● Use scissors to cut along the solid line.

● Use a spatula for the small glue tabs.

● The pale-colored numbers on the glue tabs indicate the number of the part to be attached there.



Tools and Materials



Scissors, set square, glue (such as woodwork glue), metal rod, spatula, a used pen, toothpicks, tweezers (useful for handling small parts).

Assembly tip



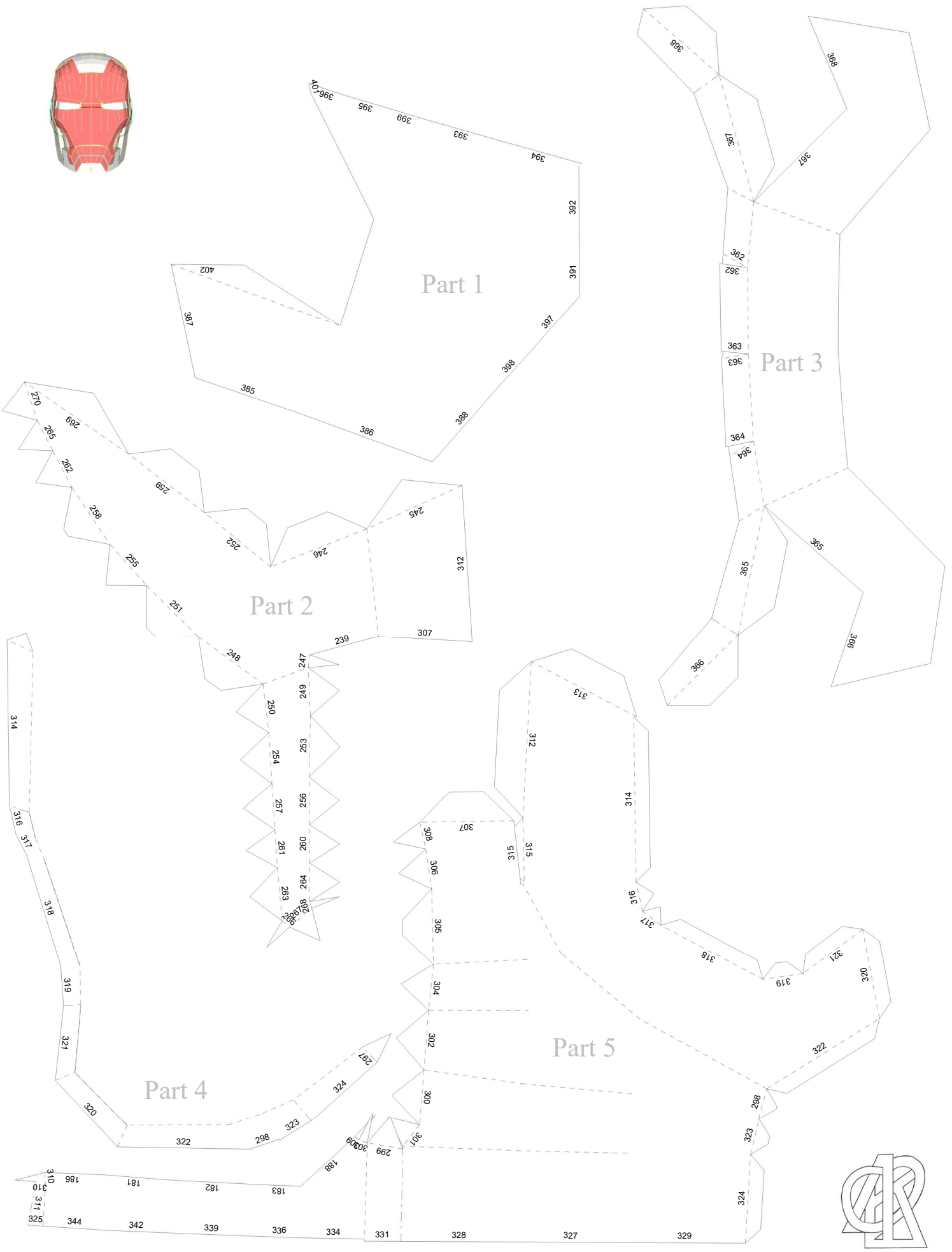
Before gluing, crease the paper along mountain fold and valley fold lines and make sure rounded sections are nice and stiff.

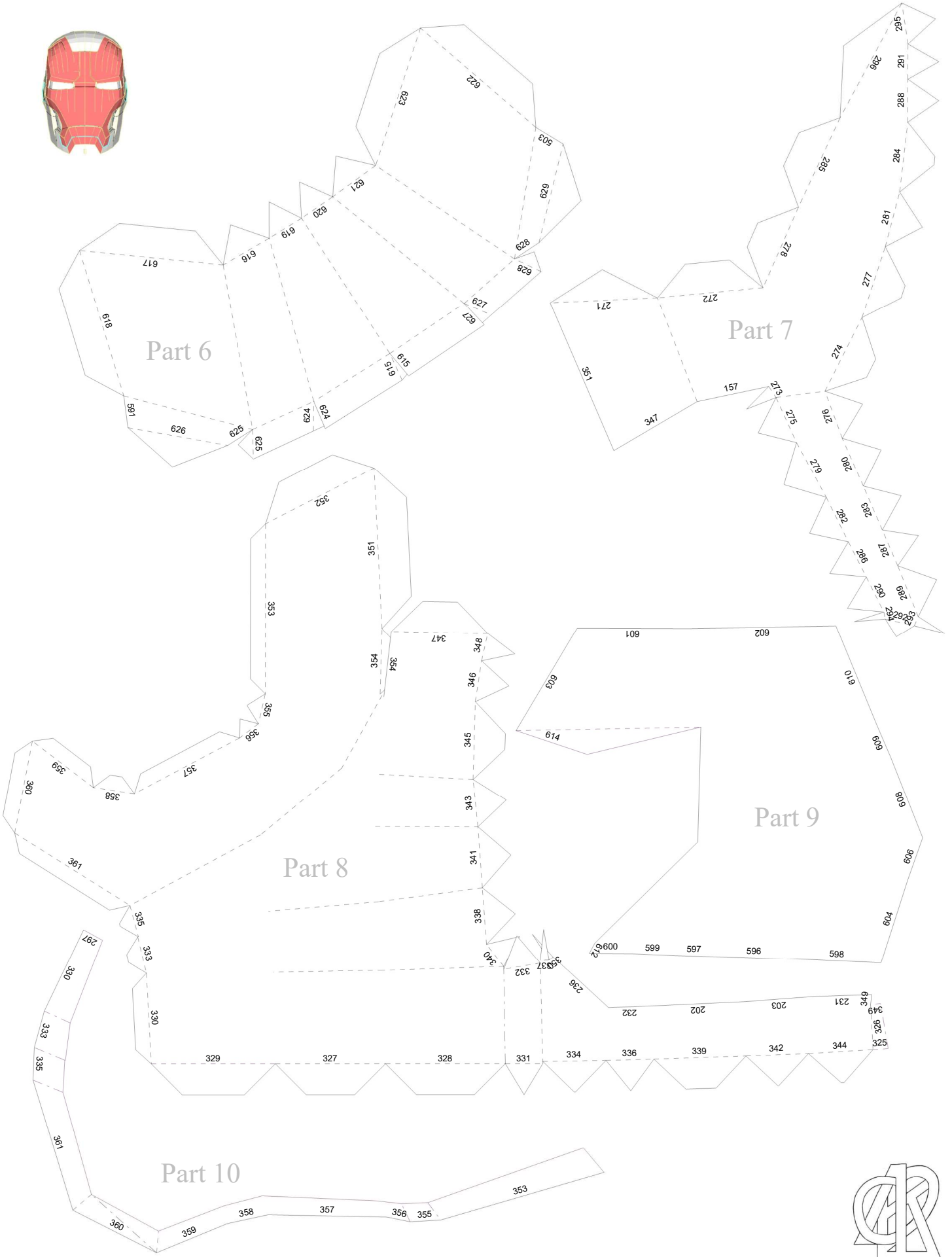
Caution

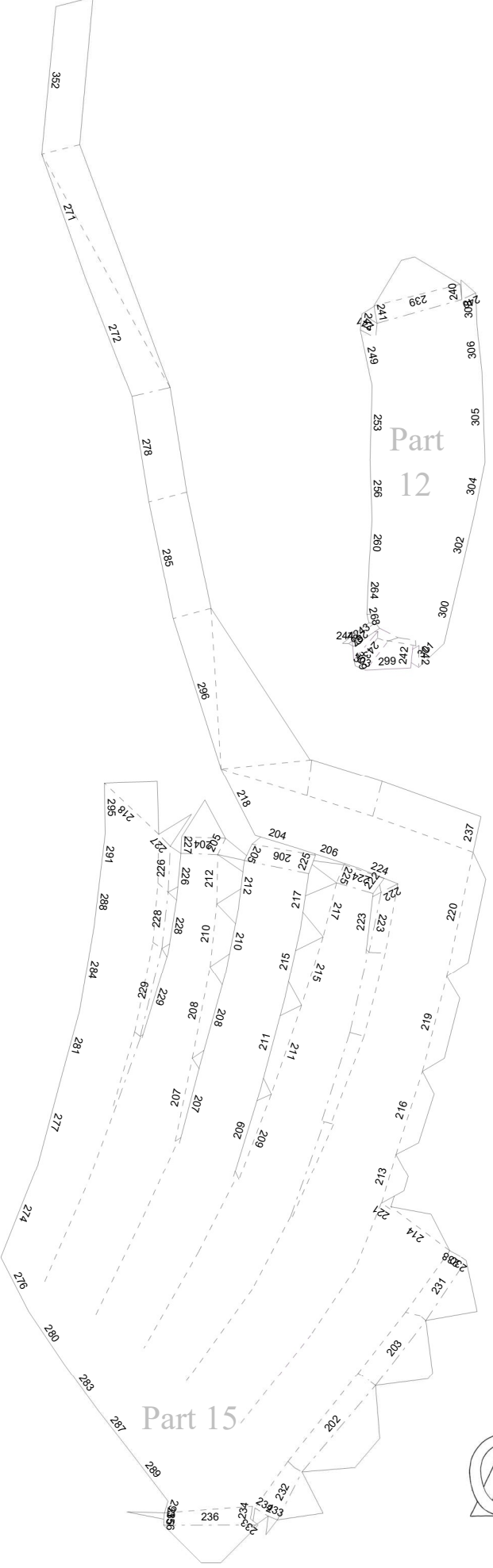
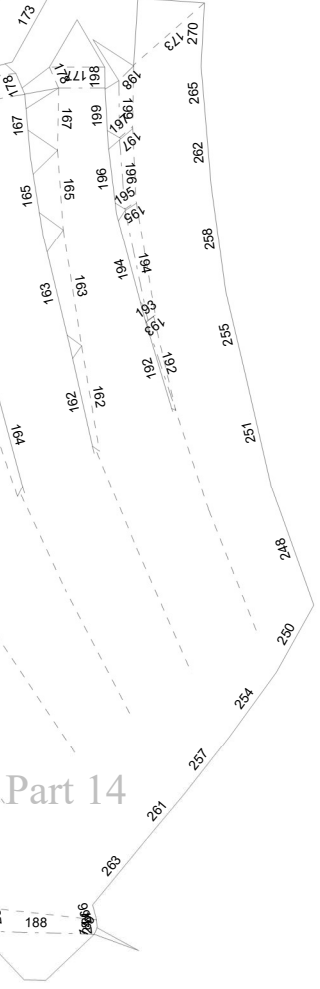
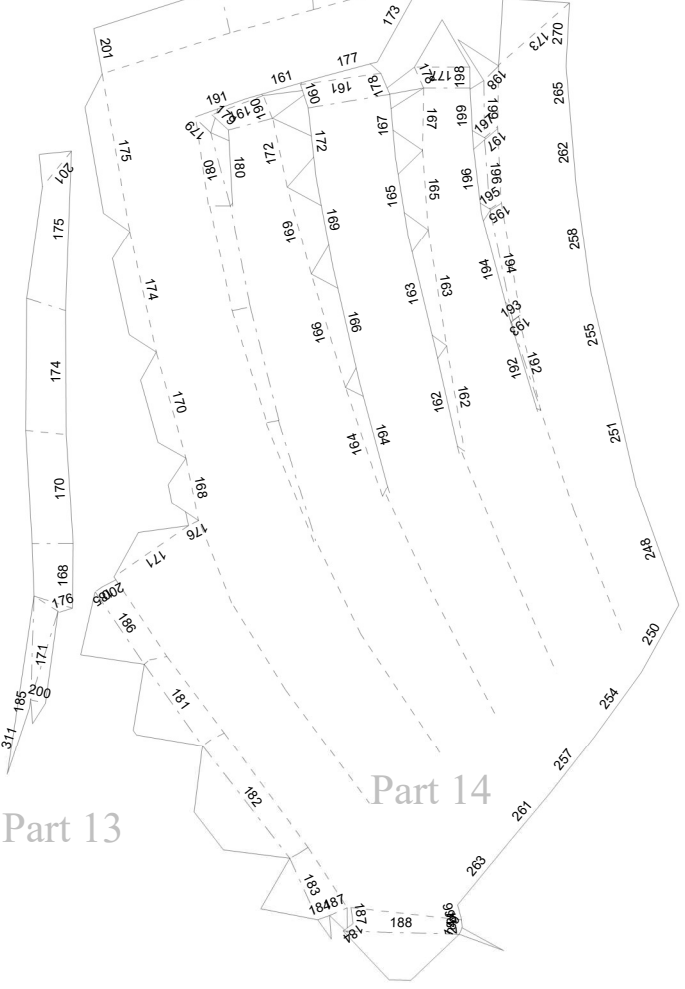
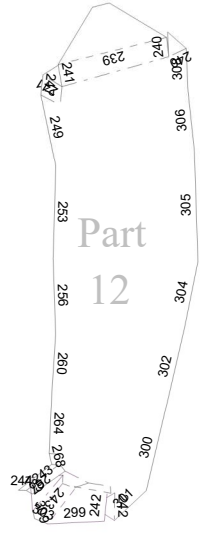
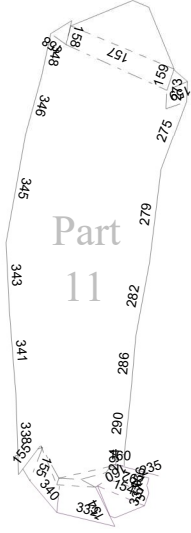


This craft requires the use of glue, scissors, tweezers, and other tools which may be dangerous to young children. Please keep them out of reach of children.

You need to build the front of the helmet (1-16) and back side of helmet (17-45) separately. Check the icons in the page corner.

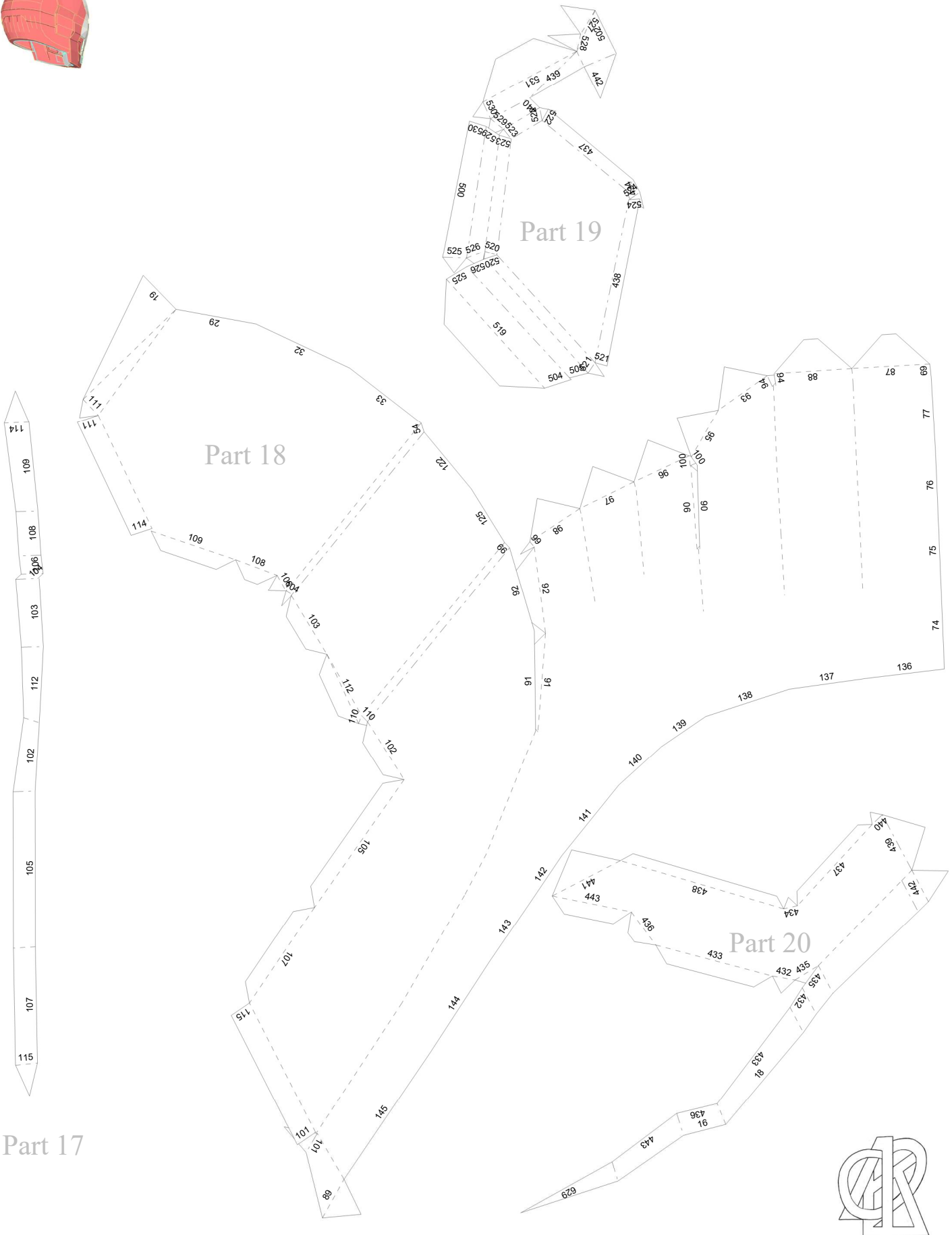






Part 16







Part 21

Part 22



