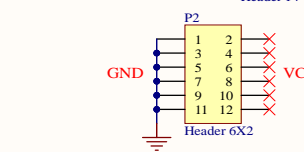
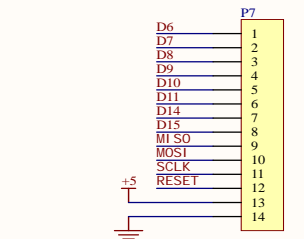
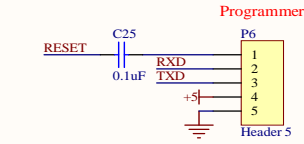
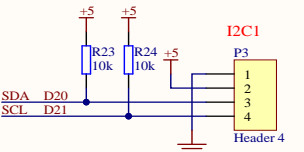
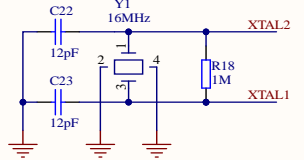
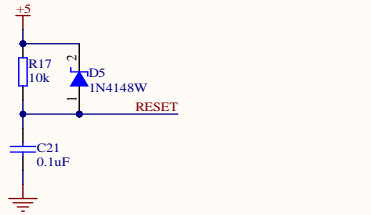
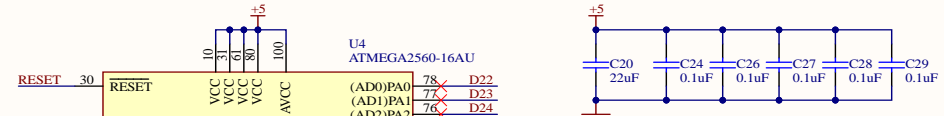
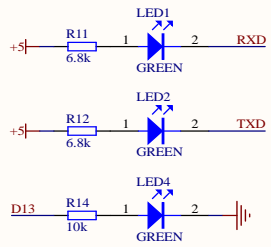
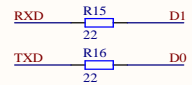
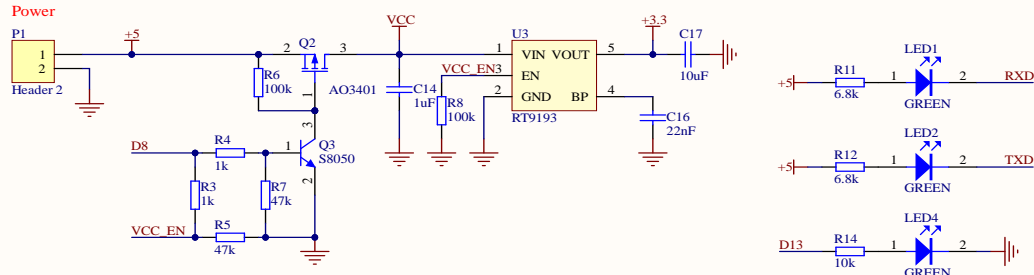
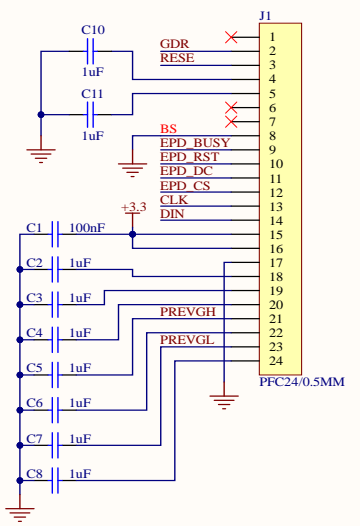


Power

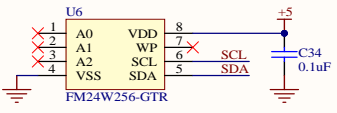
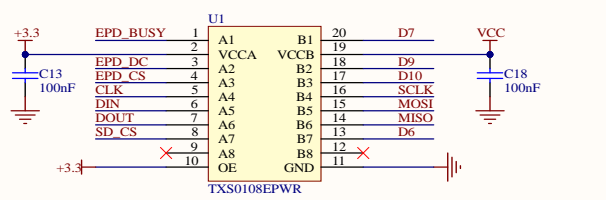


Pin	Function	Pin	Function
RESET	30	RESET	(AD0)PA0 78
XTAL2	33	XTAL2	(AD1)PA1 79
XTAL1	34	XTAL1	(AD2)PA2 75
			(AD3)PA3 74
			(AD4)PA4 73
			(AD5)PA5 72
			(AD6)PA6 71
			(AD7)PA7 70
D49	35	PL0(ICP4)	(PCINT0/SS)PB19
D48	36	PL1(ICP5)	(PCINT1/SCK)PB20
D47	37	PL2(T5)	(PCINT2/MOSI)PB21
D46	38	PL3(OC5A)	(PCINT3/MISO)PB22
D45	39	PL4(OC5B)	(PCINT4/OC2A)PB23
D44	40	PL5(OC5C)	(PCINT5/OC1A)PB24
D43	41	PL6	(PCINT6/OC1B)PB25
D42	42	PL7	(PCINT7/OC0A/OC1C)PB26
A8	89	PK0(ADC8/PCINT16)	(A8)PC0 53
A9	88	PK1(ADC9/PCINT17)	(A9)PC1 54
A10	87	PK2(ADC10/PCINT18)	(A10)PC2 55
A11	86	PK3(ADC11/PCINT19)	(A11)PC3 56
A12	85	PK4(ADC12/PCINT20)	(A12)PC4 57
A13	84	PK5(ADC13/PCINT21)	(A13)PC5 58
A14	83	PK6(ADC14/PCINT22)	(A14)PC6 59
A15	82	PK7(ADC15/PCINT23)	(A15)PC7 60
D15	63	PJ0(RXD3/PCINT9)	(SCL/INT0)PD43
D14	64	PJ1(TXD3/PCINT10)	(SDA/INT1)PD44
	65	PJ2(XCK3/PCINT11)	(RXD1/INT2)PD45
	66	PJ3(PCINT12)	(TXD1/INT3)PD46
	67	PJ4(PCINT13)	(ICP1)PD47
	68	PJ5(PCINT14)	(XCK1)PDS48
	69	PJ6(PCINT15)	(T1)PD649
	70	PJ7	(T2)PD750
D17	12	PH0(RXD2)	(PCINT8/RXD0)PE2
D16	13	PH1(TXD2)	(TXD0)PE3
	14	PH2(XCK2)	(XCK0/AIN0)PE4
D6	15	PH3(OC4A)	(OC3A/AIN1)PE5
D7	16	PH4(OC4B)	(OC3B/INT4)PE6
D8	17	PH5(OC4C)	(OC3C/INT5)PE7
D9	18	PH6(OC2B)	(T3/INT6)PE8
	19	PH7(T4)	(CLKO/ICP3/INT7)PE9
D41	51	PG0(WR)	(ADC0)PF0 97
D40	52	PG1(RD)	(ADC1)PF1 98
D39	53	PG2(ALE)	(ADC2)PF2 95
	54	PG3(TOSC2)	(ADC3)PF3 94
	55	PG4(TOSC1)	(TCK/ADC4)PF4 93
	56	PG5(OC0B)	(TMS/ADC5)PF5 92
	57		(TD0/ADC6)PF6 91
	58		(TD1/ADC7)PF7 90
AREF	98		

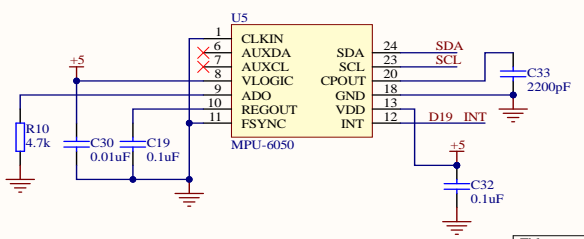
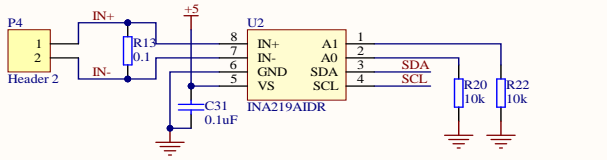
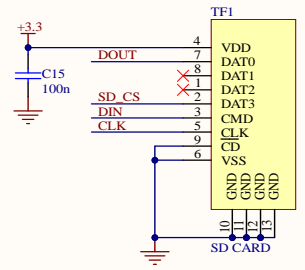
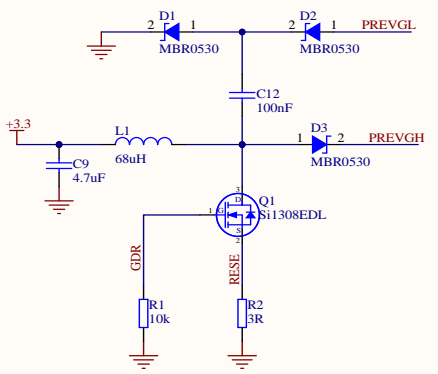
e-Paper



Level conversion



SD Card



Title		
Panel Driver		
Size	Number	Revision
A3		
Date:	5.14.2024	Sheet of
File:	C:\Wrk_Altium\PanelDriver.SchDoc	Drawn By: